

Walking information and safety



Bishop Auckland Brack's Farm Circular



For a more detailed map, please see Ordnance Survey Explorer 305 (Bishop Auckland, Spennymoor, Newton Aycliffe, Sedgfield & Crook).

- Take care when others are around and be aware of their needs.
- Before crossing roads always stop, look listen and think.
- Use safe crossing places correctly if they are available.
- Always walk on the pavement.

- Where there are no pavements, however, you should always walk on the side of the road on which the traffic is coming towards you.
- Keep to the public paths across farmland.
- Leave gates and property as you find them.
- Take extra care in areas with poor visibility.
- At night, or in dark conditions, wear bright or reflective clothing.
- Keep dogs under close control when cyclists or horse riders are nearby.
- If you have a dog with you please clean up after it and take waste to the nearest bin.
- Take your litter home.



For more information on walking maps or about the Local Motion project visit:

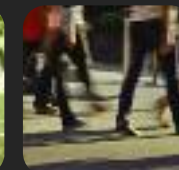
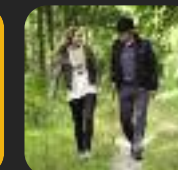
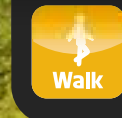
www.dothelocalmotion.co.uk
Freephone 0800 45 89 810
or email info@dothelocalmotion.co.uk

Local Motion is funded by the Department for Transport and supported by Durham County Council and Darlington Borough Council.

www.dothelocalmotion.co.uk

www.dothelocalmotion.co.uk

www.dothelocalmotion.co.uk



Brack's Farm Circular

75 Minutes/3 Miles

A delightful circular walk, taking in Bishop Auckland Town Centre and open space on the outskirts of town.

1 From the Town Hall, head across the Market Square to Newgate Street.

2 Head up Newgate Street until you come to the cross roads, then turn left onto South Church Road.

3 Follow the road until you reach the crossing. Go over the crossing and continue on past King James I Academy (on your left). When you reach ASDA, cross the road and continue along South Church Road, keeping ASDA on your right.

4 Go under the railway bridge, passing the Grand Hotel on your right.

5 Continue along the road as it bears left, passing a garage on your right and Hanover Gardens, also on your right.

6 Before you reach the lay-by and roundabout, cross the road at the crossing island.

7 Continue on until you reach the roundabout, then turn left onto the A688 towards Coundon, staying on the footpath.

8 Continue straight on until you reach the next roundabout. Again, cross the road at the traffic island (you will see a brown Auckland Way sign) and turn left, passing a small car park on your right.

9 Heading towards the new housing estate, cross the road (Flambard Drive) and enter the footpath between the hedges.

10 Continue along the footpath, passing Brack's Farm on your left and open fields on your right.

Continue until you reach the end of the path and go through the opening at the footpath sign. Turn left onto Durham Road.

11 Head along Durham Road and branch off to the right when the road splits.






12 Keep on the path to the top of the bank and follow the road round to the left, passing Kingsway car park on your left. Head along Kingsway, crossing the road at the traffic lights.

13 Continue straight on until you reach the crossroad, then turn right into Newgate Street.

14 Head down Newgate Street to the Market Place and the start of the walk.

Your Route

Key

-  Toilets
-  Railway
-  Bridge
-  Walking route
-  Bus stops

Points of interest

- Bishop Auckland Town Hall.
- Statue of Stan Laurel by artist Bob Olley at Theatre Corner.
- The Grand Hotel, built in 1901.
- Bracks Farm.
- Bracks Wood.

